

# Wall of Wind (WOW) Hurricane Simulator and Full-Scale Testing Facility at Florida International University

(Major Sponsors: State of Florida, Division of Emergency Management, and RenaissanceRe Holdings Ltd.)

## WOW Phase 1



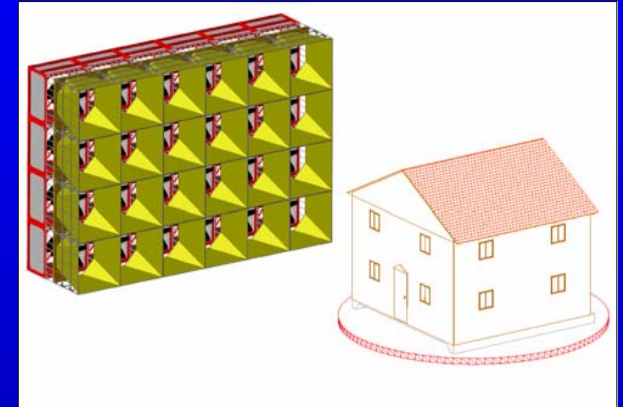
2-Fan Mobile Wall of Wind to Test Structures with Category 3 Hurricane Wind-Rain Simulation. Supported by State of Florida Division of Emergency Management

## RenaissanceRe WOW Phase 2



6-Fan RenaissanceRe Wall of Wind to Test Single-Story Structures with Category 4 Hurricane Wind-Rain Simulation. Supported by RenaissanceRe Holdings Ltd. and the State of Florida.

## WOW Phase 3



Wall of Wind Phase 3 to Test Two-Story Structures with Category 5 Hurricane Wind-Rain-Debris Simulation (Summer 2008). Recent funding received from State of Florida.



Roof Fascia Testing for Advanced Roofing



Testing of Real House in Sweetwater City of Miami



Vortex Suppression Technology Testing



Florida Power and Light (FPL) Equipment Testing



RenRe WOW Facility at FIU (September 2007)

### Publications:

1. "Wall of Wind Full-Scale, Destructive Testing of Coastal Houses and Hurricane Damage Mitigation," Journal of Coastal Research, Vol. 24, p. 113-119, 2007.

2. "Innovative Testing Facility to Mitigate Hurricane-Induced Losses," EOS Transactions American Geophysical Union, Vol. 88 (25), 2007.

3. "Hurricane Damage Mitigation of Coastal Houses," Proc. 12th Intl. Conf. on Wind Eng., 2007.